

## UNIVERSITY OF WASHINGTON COVID-19 PREVENTION PLAN FOR THE WORKPLACE

### 1. INTRODUCTION

The University of Washington's COVID-19 Prevention Plan ("University Plan") helps ensure the health and safety of personnel by reducing the potential for COVID-19 transmission at University locations. The measures are based on [Washington Ready COVID-19 guidance](#); [Washington Department of Labor & Industries \(L&I\) requirements](#), the [Governor's Proclamation for Higher Education](#); and guidance from state and local public health agencies. This plan is updated as regulations and public health guidance change. UW Medicine medical facilities follow UW Medicine specific policies and procedures.

### 2. DEFINITIONS

**University Plan** is the University of Washington's COVID-19 Prevention Plan for the Workplace.

**University unit** is a unit or campus with an administrator reporting directly to the President or Provost. This includes UW Bothell, UW Tacoma, and UW Medicine.

**Unit leader** is the administrator reporting directly to the President or Provost.

**Unit COVID-19 Prevention Plan** is a local COVID-19 Prevention Plan developed and routinely updated by each University unit that covers all worksites (e.g., UW Facilities, Office of Research).

**Unit or site-specific COVID-19 Prevention Plans** are local plans developed and updated as necessary and appropriate to address unique COVID-19 prevention and control strategies at a local level. The number and structure of these plans are determined by the unit leader and kept on file locally (e.g., Transportation Services, individual research lab).

**Personnel** includes staff, faculty, other academic personnel, students in the workplace, and student employees.

**COVID-19 Site Supervisor (optional)** is an individual identified by their unit leader (or their designee) to ensure adherence with a site-specific COVID-19 Prevention Plan. If a unit does not appointment a COVID-19 Site Supervisor, this is the responsibility of the personnel supervisor, manager, principal investigator, or other unit leadership designee.

**Vaccine Attestation** is when an individual has submitted a report of their vaccine status through the appropriate tracking system (personnel through Workday, students through Hall Health Center or another acceptable means). Refer to the [UW COVID-19 Vaccination Policy](#) for more information.

**Vaccination Status:** Individuals may have a vaccination status of either fully vaccinated, or *not* fully vaccinated. Individuals who are not fully vaccinated may have declined for a medical or philosophical reason, may not have finished their vaccine series, or may not have reported their vaccination through the appropriate verification system.

**Fully Vaccinated:** An individual is fully vaccinated when two weeks have passed since they received the second dose of a COVID-19 vaccine in a two-dose series (e.g., Pfizer or Moderna), or two weeks after they received a single-dose COVID-19 vaccine (e.g., Johnson & Johnson).

### 3. OVERVIEW AND APPLICABILITY

The University Plan covers all University work environments. Each University unit is required to develop and implement a unit-specific COVID-19 Prevention Plan and/or a site-specific plan that covers all personnel and worksites.

[Attachment A](#) is a template for the Unit or Site-Specific COVID-19 Prevention Plan that units or workplaces can use to complete their plans. Please note the following:

- Units are not required to use the template in Attachment A if plans exist in a different format (e.g., individual research labs, UW Medicine hospital and clinics, etc.) or if they prefer to use another format. If an alternative format is used, it must include all required elements in the plan and that it is aligned with University policies and procedures.
- Units with existing plans are required to update their plans as needed to include the required elements in the University Plan, along with any additional industry-specific guidelines, such as, but not limited to, those for healthcare, dental clinics, or COVID-19 research settings.

### 4. ROLES AND RESPONSIBILITIES

The following units and individuals have responsibilities for COVID-19 prevention in the workplace:

#### UNIVERSITY CENTRAL ROLE - EXECUTIVE OFFICE

- Develop policies and procedures for safe on-site work, including vaccination attestation, testing and contact tracing.
- Develop planning parameters to guide personnel who are returning to work and school on site in accordance with state and local requirements and guidelines.
- Review, evaluate and communicate new state and local requirements, and update policies and procedures accordingly.
- Lead and coordinate University-wide response to COVID-19 including deployment of the [Advisory Committee on Communicable Diseases](#) (ACCD) and the [Emergency Operations Center](#) (EOC).
- Coordinate any central procurement of COVID-19 cleaning supplies, personal protective equipment, and other equipment.
- Coordinate central expense tracking for state or federal reimbursement.
- Assess University-wide liability and risks.

#### UNIVERSITY CENTRAL ROLE - UW FACILITIES

(Includes Housing and Food Services and facilities at UW Bothell and Tacoma)

- Perform regular building operations and maintenance, cleaning, and disinfection of common areas.
- Manage University-wide transportation and parking.
- Maintain University buildings including HVAC systems.

- Train and coordinate University building coordinators.

### **UNIVERSITY CENTRAL ROLE - ENVIRONMENTAL HEALTH & SAFETY DEPARTMENT (EH&S)**

- Develop University-wide COVID-19 safety policies, plans and guidance documents.
- Perform COVID-19 case follow up and contact tracing.
- Assist units with COVID-19 Prevention Plans and procedures.
- Respond to health and safety concerns related to adherence to COVID-19 prevention practices.
- Monitor compliance of COVID-19 prevention measures in the workplace.

### **UNIT LEADER (DIRECT REPORT TO PRESIDENT OR PROVOST)**

- Oversee the development and implementation of unit COVID-19 Prevention Plan and any site-specific Prevention Plans.
- If needed, assign a designated COVID-19 site-supervisor(s) to oversee unit and site-specific plan implementation. Otherwise, these duties are the responsibility of the supervisor.
- Ensure all personnel are trained
- Acquire appropriate personal protective equipment (PPE), cleaning supplies, and other supplies for distribution to personnel.
- Consult with EH&S as needed.
- Ensure posting of required signage related to COVID-19 safety.
- Develop strategies to communicate with personnel, COVID-19 Site Supervisors or personnel supervisors, and building coordinator(s) to keep unit and/or site-specific plans current with changes to COVID-19 guidelines, regulations, and University policies.

### **COVID-19 SITE SUPERVISOR (OPTIONAL)**

- The COVID-19 Site Supervisor duties may be assigned to a personnel supervisor, principal investigator, or designee, who is assigned and has the authority to monitor and enforce COVID-19 health and safety requirements and address questions and concerns from personnel.
- Develop and ensure adherence with the site-specific COVID-19 Prevention Plan, including face covering and vaccine verification requirements.
- Enforce face covering requirements for not fully vaccinated individuals in locations where they are required.
- Train direct reports in the workplace on the contents of the unit and site-specific COVID-19 Prevention Plan.
- Keep unit and/or site-specific plans current with changes to COVID-19 guidelines, regulations, and University policies.
- Report COVID-19 safety concerns to the personnel supervisor or to EH&S.

### **PERSONNEL SUPERVISOR**

- Ensure the COVID-19 Prevention Plan is implemented and policies and procedures are adhered to by all personnel.
- Train direct reports in the workplace on the contents of the unit and site-specific COVID-19 Prevention Plan (can be delegated to the COVID-19 Site Supervisor if the individual is different than the personnel supervisor).
- Address or escalate reported or observed safety concerns to a unit leader or to EH&S.

## PERSONNEL

- Follow all elements of the site-specific COVID-19 Prevention Plan.
- Get tested if you have COVID-19 [symptoms](#).
- Report COVID-19 positive test results and close contact to the [EH&S COVID-19 Response & Prevention Team](#).
- Report safety concerns to a supervisor or to [EH&S](#).

## BUILDING COORDINATOR

- Help distribute information and updates to building occupants related to COVID-19 prevention and response efforts.
- Post University COVID-19 prevention posters at entrances and in common areas of building(s). Update these posters with transition to Return to Work/School.
- Ensure cleaning supplies and hand sanitizer are available in common areas of buildings.
- Attend trainings and coordinating sessions organized by UW Facilities.
- Establish and monitor adherence to access control, building operations, egress routes and emergency procedures as they relate to the University Plan.
- Perform activities as outlined in the [Facilities Building Readiness Guidelines](#).

## 5. REQUIRED PLAN ELEMENTS

**Required elements of the University's COVID-19 Prevention Plan are below.** The below elements are required to be included in all unit-specific COVID-19 Prevention Plans. Physical distancing is no longer required, except in specific circumstances (see section E).

- A. [Vaccination](#)
- B. [Procedures for sick personnel, symptom monitoring, reporting and response](#)
- C. [Good hygiene](#)
- D. [Clean surfaces](#)
- E. [Face coverings, personal protective equipment \(PPE\) and alternative strategies](#)
- F. [Communication and training](#)

## A. VACCINATION

**COVID-19 vaccination is the most critical element of the University's COVID-19 Prevention Plan. All University personnel and students are required to be vaccinated against COVID-19 unless a medical, religious, or philosophical exemption is declared. All UW units, personnel, and students must comply with the [UW COVID-19 Vaccination Policy](#) requirement by submitting the University COVID-19 Vaccine Attestation Form by the established deadlines in accordance with the policy.**

Supervisors may remove the face covering requirement on an individual bases, after verifying an individual they supervise has submitted a COVID-19 Vaccine Attestation Form indicating they are fully vaccinated. Please note, face coverings are required in health care, child care and K-12 setting, and UW shuttles regardless of vaccination status.

## B. PROCEDURES FOR SICK AND SYMPTOMATIC PERSONNEL

**University units are required to take measures to prevent sick personnel from entering the worksite, and reporting suspected and confirmed COVID-19 cases and close contacts to EH&S.**

### Symptom monitoring

The University offers a daily [symptom attestation](#) and guidance for health care and child care facilities and other units with location-specific requirements for submitting a symptom attestation. Individuals are required to self-monitor daily for symptoms and stay home or go home if they are sick or have any symptoms of COVID-19 infection.

Personnel who experience *any* symptoms of [COVID-19 infection](#), including fever (100.4 degrees or higher), cough, shortness of breath or difficulty breathing, fatigue, loss of taste and/or smell, chills, sore throat, congestion or runny nose, headache, muscle or body aches, and gastrointestinal symptoms, such as nausea, vomiting or diarrhea, are required to follow these instructions:

**Stay home: If you are sick, you *must* stay home and away from other people, even if you are vaccinated and/or have mild symptoms.** University units are required to direct personnel to follow the steps in the FAQ "[What do I do if I feel sick?](#)" which includes the information below.

### 1. Get tested for COVID-19

- **If you are enrolled in the [Husky Coronavirus Testing program](#)**, report your symptoms in your daily symptom survey, and you will receive testing instructions. Do **not** go to school or work until you receive your test result, *even if you feel better*. **If you are not enrolled in the [Husky Coronavirus Testing program](#)**, you can get tested with your personal health care provider or at a public testing site.
- **Notify the [UW COVID-19 Response and Prevention Team](#) as soon as possible if you test positive for COVID-19** at [covidehc@uw.edu](mailto:covidehc@uw.edu) or [206.616.3344](tel:206.616.3344). UW medical center personnel should contact their respective [employee health services](#).
- Follow **public health guidelines to help you recover and protect others from getting sick**. These actions include staying home and physically away from people and pets, wearing





a face covering, and being stringent about hygiene. Read the FAQ *“What do I do if I have confirmed or suspected COVID-19?”* on the UW [COVID-19 frequently asked questions](#) webpage for more information about steps you'll need to take. You can also learn more from [Public Health — Seattle & King County](#) and the [Washington State Department of Health](#).

- 2. Notify the UW COVID-19 Response and Prevention Team if you have close contact with individuals who have COVID-19.** Close contact means being within 6 feet of a person with COVID-19 for a cumulative total of at least 15 minutes during a 24-hour period (even if both individuals were wearing face coverings), living with or caring for a person who has COVID-19, or having direct contact with infectious secretions (e.g., being coughed on, kissing, sharing utensils). The exposed individual is required to follow the quarantine requirements outlined in the FAQ [“I may have been exposed to COVID-19. What should I do?”](#)

[Washington Exposure Notifications –WA Notify](#) mobile app is a tool to alert users if they may have been exposed to a COVID-19 positive person. University personnel and students are encouraged to download or activate the app on their mobile devices.

### University response- EH&S contact tracing

When notified of a person with suspected or confirmed COVID-19, the University's [COVID-19 Response and Prevention Team](#) takes the steps listed below to maintain the health and safety of the campus community. The University is working in coordination with local health departments on COVID-19 response efforts and complies with applicable privacy requirements.

The University's [case response](#) activities include:

- Obtain details about the person's symptoms, locations on campus and close contacts.
- Conduct a risk assessment to determine an action plan, such as:
  - Instructions and guidance for self-isolation.
  - Notifying the academic and/or work unit.
  - Notifying UW-affiliated individuals or groups who were in close contact with the COVID-19 positive person within 48 hours prior to the development of symptoms (or, if asymptomatic, 48 hours before their COVID-19 test).
  - Evaluating the specific locations for potential [cleaning and disinfection](#), in accordance with guidance from the Centers for Disease Control and Prevention (CDC) and L&I.
- Provide return-to-work information to individuals who have COVID-19, close contacts of individuals who have COVID-19, University/unit representatives and UW Human Resources.
- The identity of individuals with COVID-19 and their close contacts is not publicly disclosed. It remains private among University representatives involved in the public health response, including EH&S representatives, unit representatives (as needed), and UW Human Resources.

For information about the University's response to a COVID-19 case on campus, visit the [COVID-19 Case Response](#) page on the EH&S website.



## Human Resources assistance

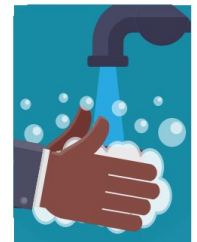
UW Human Resources (HR) and Academic Human Resources (AHR) provide resources for [staff](#) and [academic personnel](#) regarding **time away from work**; talk with your HR consultant or AHR Business Partner with issues pertaining to your work area. Guidance and protections for those at [higher risk for developing more serious COVID-19 illness](#) are also available on the HR website.

Per state and local public health guidelines, University units should not request a doctor's note, a negative test result or positive antibody test following a report of COVID-19 illness.

## C. GOOD HYGIENE

**Supervisors are required to remind personnel they can reduce the risk of spreading COVID-19 by doing the following:**

- Wash hands often with soap and water for at least 20 seconds. If water is not available, use hand sanitizer with at least 60% alcohol content.
- Avoid touching your eyes, nose, or mouth with unwashed hands.
- Avoid contact with people who are sick.
- Stay home when sick and avoid close contact with others, even if you are vaccinated against COVID-19.
- Cover your mouth and nose with your elbow or a tissue when coughing or sneezing, and immediately dispose of the used tissue.



**Personnel must have access to soap and running water to wash their hands** after touching any surface or tool suspected of being contaminated, before and after eating or using the restroom, and before touching their face. Secondary handwashing or sanitizing stations may be set up with either hand sanitizer or wipes/towelettes.

**Place posters in visible locations to remind personnel of key moments to wash hands:**



- **Before, during, and after** preparing food
- **Before** eating food
- **Before** and **after** caring for someone at home who is sick
- **Before** and **after** treating a cut or wound
- **Before** exiting the laboratory
- **After** using the toilet
- **After** contact with high-touch surfaces (e.g., elevators, lobby areas, reception desks, etc.)
- **After** blowing your nose, coughing, or sneezing
- **After** removing gloves or other personal protective equipment.
- **After** touching an animal or animal waste
- **After** touching garbage

## Resources

[Stay Healthy, Huskies Toolkit – download posters](#)  
[CDC – What you need to know about handwashing \(video\)](#)

## D. CLEAN SURFACES

University units are required to clean (and disinfect as needed) their worksite surfaces regularly in accordance with the [University's COVID-19 Enhanced Cleaning and Disinfection Protocol](#). Units are required to provide cleaning and disinfection products, along with the appropriate PPE and instructions for the frequency and safe use of products.

University custodial units clean high touch surfaces in common areas of buildings, such as restrooms, stairwells, and elevators. The University maintains a [central procurement site](#) for COVID-19 cleaning supplies and PPE. (Visit the UW Procurement [How to Buy](#) page for details.)

### University units:

- Keep a cleaning schedule to maintain general housekeeping to prevent buildup of dirt and clutter.
- Make cleaning supplies available for workers to do spot-cleaning when necessary. Consider single-use disinfectant wipes for high touch points.



### Frequency: Clean work areas regularly.

- For surfaces and equipment touched by multiple workers (e.g., doorknobs, tables, computer keyboards, handrails, exercise rooms), clean and disinfect daily, between uses, or when visibly unclean.
- For surfaces and equipment touched by one individual, clean and disinfect periodically, when unclean, as a minimum.

**Safe use of products:** Follow the manufacturer's instructions for use of all cleaning and disinfecting products, and use personal protective equipment as required.



Use one of the following to disinfect hard, non-porous surfaces:

- [EPA-registered disinfectant for use against SARS-CoV-2](#) **or**
- Alcohol solution with at least 70% alcohol **or**
- 10% freshly prepared bleach/water solution

Avoid putting disinfectant gels or liquids on electronics, including elevator buttons, unless they have been indicated as safe for those devices.

[Resources](#) are available on the EH&S website to assist units to safely use disinfectants to prevent the spread of COVID-19.

- [COVID-19 Chemical Disinfectant Safety Information](#)
- [Safer Cleaning, Sanitizing and Disinfecting Strategies to Reduce and Prevent COVID-19 Transmission](#)



## E. FACE COVERINGS, PERSONAL PROTECTIVE EQUIPMENT (PPE) AND ALTERNATIVE STRATEGIES

All individuals at a University location, including faculty, staff, students, contractors, vendors and visitors must adhere to the [UW COVID-19 Face Covering Policy](#).

- **Individuals who are *not* fully vaccinated against COVID-19 are required to wear a face covering** indoors when on site at a University of Washington location.
- **A face covering is required, *regardless of vaccination status*, in health care settings, University shuttles, K-12 schools, childcare facilities, and day camps in locations where children are present or expected to be present.**
- ***Non-fully vaccinated* individuals, and all individuals in the above settings where a face covering is required regardless of vaccination status, must wear a face covering:** Indoors when other people are present and in all public and common areas, such as lobbies, hallways, stairways, restrooms, elevators, and in shared vehicles.
- ***Wearing a face covering is optional for fully vaccinated individuals*** on site at a University of Washington location except for locations where a face covering is required regardless of vaccination status. **Supervisors must verify personnel are fully vaccinated against COVID-19 before removing the face covering requirement** in the workplace, in accordance with L&I and the University's [COVID-19 Vaccination Policy](#).

Face coverings are required to be provided to personnel who are not fully vaccinated or choose to wear them voluntarily. Personnel must be trained on the proper use, care, storage and disposal of face coverings and PPE. University units should refer to the [EH&S Guidance on Facemask Use for Preventing the Spread of COVID-19](#) for training personnel on the selection, care and use of face coverings and facemasks.

**Public Spaces:** Vaccination status does *not* need to be verified for members of the public, customers, and visitors on campus. These individuals will be informed of the requirement for non-fully vaccinated people to wear a face covering indoors by the host unit and/or via signs in and around University buildings.

**In certain work settings, PPE may be required according to potential risk of exposure to COVID-19.** Refer to the [Workplace COVID-19 Risk Level and Selection of Personal Protective Equipment \(PPE\)](#) guide and the [Guidelines for Personal Protective Equipment](#) for additional guidance on the [selection](#) and use of PPE.

### Alternative strategies

A combination of strategies are utilized to minimize COVID-19 risk in the workplace. These strategies are listed below in order of most effective to least effective:

1. Keeping people with symptoms from entering the workplace
2. Promoting vaccination
3. Using engineering controls (e.g., exhaust ventilation, physical barriers)

4. Physical distancing is recommended for those who are not fully vaccinated, particularly in crowded settings or in spaces that are not well ventilated. Physical distancing is required in health care, child care, and K-12 settings. Fire code occupancy limits are met.
5. Administrative controls (e.g., stagger work shifts and/or breaks)
6. Wearing face coverings and PPE where required

Units should evaluate whether additional or alternative strategies are necessary in their work settings based on their likelihood of exposure to COVID-19, such as in health care or other higher risk settings.

**Steps for selecting and implementing an alternative strategy:**

1. Request EH&S review and unit leadership approval to consider an alternative strategy.
2. Develop a [job hazard analysis](#) that identifies the hazards and control strategies to minimize the risk of exposure.
3. Train personnel on alternative strategies use. Document the training.

**F. COMMUNICATION AND TRAINING**

Units are required to communicate to personnel about COVID-19 prevention on campus, and train personnel on the contents of the [University’s COVID-19 Prevention Plan](#) and the unit-specific COVID-19 Prevention Plan. Training must be documented.

The University’s [COVID-19 Safety Training: Back to the Workplace](#) is required for all University personnel prior to or upon returning to on-site work. In addition, units (e.g., COVID-19 Site Supervisor or personnel manager) are required to train personnel on the contents of the unit or site-specific COVID-19 Prevention Plan.

[Attachment B](#) in this document can be used to document unit or site-specific COVID-19 training. Unit or site-specific training is conducted before or on the first day of returning to work at a University location, reviewed as updates are made, to explain the protective measures in place for all personnel in a unit or worksite. Personnel must be trained, even if they have been performing critical work on site at a UW work location. Training is required to be provided in a terminology best understood by personnel.

**Communicate safe practices**

All University units are required to communicate to personnel about ways to prevent the spread of COVID-19, including reviewing their unit and site-specific procedures for COVID-19 prevention.

The [UW Stay Healthy, Huskies](#) toolkit has posters and graphics in various formats to post and communicate in your work area. Download and place posters in common areas, such as in break rooms, lunchrooms, lobbies, and bathrooms.

1. Place the “**Back to the workplace**” poster in work areas and reception areas.





2. Place the **“Face coverings are required for unvaccinated individuals”** poster in locations where face coverings are *not* required for all individuals.
3. Place the **“Face coverings are required regardless of vaccination status”** poster in locations where all individuals are required to wear a face covering regardless of vaccination status (i.e., health care, K-12 and child care settings and in UW shuttles).
4. Place the **“Clean and disinfect”** poster near shared equipment that must be cleaned after each use and in common areas, such as meeting rooms and break rooms, and near high-touch surfaces.
5. Place the **“Wash your hands the right way”** in bathrooms and near handwashing stations.

The University’s [Novel coronavirus & COVID-19: facts and resources](#) webpage provides information about COVID-19 for the campus community and is updated regularly.

Encourage personnel to read guidance from the [Frequently Asked Questions](#), including:

- *What do I do if I feel sick?*
- *What do I do if I have confirmed or suspected COVID-19?*
- *I may have been exposed to COVID-19. What should I do?*

COVID-19 information and workplace safety requirements are available in 36 languages from the [Washington State L&I COVID-19 Resources](#) webpage.

### **Hazard communication for personnel working with disinfectants**

It is important to communicate the potential hazards and safety measures to personnel working with chemical disinfectants. Chemical disinfectant exposure may cause health issues if used improperly, so it is important that health and safety considerations are accounted for prior to use.

Information about working safely with disinfectants is available on the EH&S website:

- [COVID-19 Chemical Disinfectant Safety Information](#)
- [Workplace COVID-19 Risk Level and Selection of Personal Protective Equipment \(PPE\) guide](#)
- [Guidelines for Personal Protective Equipment](#)

Visit the [Chemical Hazard Communication](#) webpage on the EH&S website for additional information about communicating chemical safety.

## 6. NOVEL CORONAVIRUS (COVID-19) RESOURCES

---



[CDC Coronavirus \(COVID-19\)](#)

---



[EPA Disinfectants for Use Against SARS-CoV-2](#)

---



[OSHA COVID-19](#)

---



[UW DEOHS: Safer Cleaning, Sanitizing and Disinfecting Strategies to Reduce and Prevent COVID-19 Transmission](#)

[UW EH&S COVID-19 Health & Safety Resources](#)

[UW Novel coronavirus & COVID-19: facts and resources](#)

[UW Stay Healthy, Huskies - Toolkit Downloads \(Posters, Media\)](#)

[UW Clean and Safe Storefront](#)

---



[WA DOH – COVID-19](#)

[WA DOH – Face Covering Order](#)

---



[Healthy Washington Business Reopening Guidance](#)

[Washington State Higher Education Proclamation](#)

[Washington State Coronavirus Response](#)

---

[WA L&I DOSH DIRECTIVE 1.70 General Coronavirus Prevention Under Stay Home-Stay Healthy Order](#)

[WA L&I Coronavirus \(COVID-19\) Safety Topic](#)



[WA L&I Coronavirus \(COVID-19\) Prevention: General Requirements and Prevention Ideas for Workplaces](#)

[WA L&I Directive 11.80 Temporary Enforcement Guidance Annual Fit-Testing for N95 Filtering Facepieces and Respirator/Face Covering Selection During the COVID-19 Outbreak](#)

---

Please contact EH&S at [ehsdept@uw.edu](mailto:ehsdept@uw.edu) or call 206.543.7262 with questions or for assistance.

Concerns about COVID-19 safety can be reported anonymously on the [EH&S website](#).

***This document will be updated as regulations and public health guidance change.***



ATTACHMENT A:

UNIT OR SITE-SPECIFIC COVID-19 PREVENTION PLAN TEMPLATE

University units are required to document their workplace COVID-19 prevention measures and review them with personnel. This template may be used for that purpose and used at a worksite level or department level, as appropriate for the unit. If an alternative format is used (e.g., Return to In-Person Research Plan), it must include all required elements for a plan and align with University policies and procedures.

Date: 7/30/21	Completed By: Bridget Faherty
Name of Responsible Supervisor <u>or</u> COVID-19 Site-Supervisor: Scott Dunham	
Unit Name: Electrical and Computer Engineering	Worksite Location(s): ECE Building & Sieg Hall, UW Seattle Campus
Unit COVID-19 Prevention Plan and Plan Location: ECE Building & Sieg Hall, UW Seattle Campus	

MANAGEMENT AND OVERSIGHT	Check all that apply (all required):	Describe:
1. COVID-19 Prevention Plan Oversight	<ul style="list-style-type: none"> <li>X A responsible supervisor or a designated COVID-19 Site Supervisor is assigned to ensure all the elements of the site-specific COVID-19 Prevention Plan are followed.</li> <li>X The supervisor will keep the site-specific plan updated and current with changes to COVID-19 guidelines, regulations, and University policies.</li> <li>X The supervisor will keep the site-specific plan on site in hardcopy or electronically, so it is available to all personnel.</li> <li>X The supervisor will train personnel on the contents of the plan and any updates.</li> </ul>	<p>Scott Dunham, ECE Covid Czar will work in tandem with Bridget Faherty, ECE Administrator (until a new facilities manager is hired to resume COVID responsibilities) to ensure COVID plan remains updated, accessible and enforced.</p> <p>Employees are required to take the UW COVID-19 Safety Training: Back to the Workplace. The current ECE COVID-19 Prevention Plan will be</p>



	<p>X The supervisor or designee is available to respond to issues and questions during work and class activities.</p>	<p>available on the department Covid-19 Information and Resources webpage and updated as necessary. Training logs for the ECE COVID-19 Prevention Plan will be managed through a Google form that requires each person to attest that they have read the document. The Chair has delegated compliance and tracking of UW COVID-19 Safety Training and lab-specific training to department supervisors. Supervisors must manage and keep a log of the UW COVID-19 Safety Training and lab-specific training for all personnel.</p>
VACCINATION	Check all that apply (all required as possible):	Describe:
<p>2. Vaccination Verification</p>	<p>X All personnel have submitted the University COVID-19 Vaccine Attestation Form in Workday by established deadlines (see <a href="#">UW COVID-19 Vaccination Policy</a>). Paper form or alternative method is used to verify vaccination status for personnel who do not have access to Workday.</p> <p>X Ensure personnel not verified to be fully vaccinated are required to wear a face covering.</p> <p>X Contractors, vendors, and visitors are notified of the <a href="#">UW COVID-19 Face Covering Policy</a> and the requirement to wear face coverings at the University unless fully vaccinated except where face coverings are required regardless of vaccination status (e.g., health care, child care, K-12 settings).</p>	<p>Department notifications continue to go out reminding all personnel to complete their attestation prior to their return to campus or 9.10.21 (whichever is sooner).</p> <p>Administrator and HR Specialist run a weekly report of attestation completions and send to supervisors, so they can enforce mask wearing for individuals in their</p>





		<p>areas not attested as fully vaccinated.</p> <p>Signs are posted in the main office to remind all who enter, included vendors, of the policy to wear a mask if not fully vaccinated.</p>
<b>PROCEDURES FOR SICK PERSONNEL</b>	<b>Check all that apply (all required as possible):</b>	<b>Describe:</b>
<p>3. Describe how you are preventing people with symptoms from coming to the site and/or working while sick.</p>	<p>X Ask personnel to self-monitor their symptoms each day and to stay home if they have any <a href="#">symptoms of COVID-19</a> or if they are sick, regardless of vaccination status.</p> <p>X Requiring personnel who may be sick or symptomatic to go home, regardless of vaccination status.</p> <p>X Consult with the <a href="#">COVID-19 Response and Prevention Team</a>.</p> <p>X Discuss accommodations for <a href="#">personnel at higher risk</a> of severe illness with your HR consultant or AHR business partner.</p>	<p>All personnel required to monitor their symptoms daily and stay home if symptomatic. Individuals who are on site and symptomatic will be asked to go home and return when they are no longer symptomatic.</p> <p>High risk personnel should follow the UW accommodation process as outlined at <a href="https://hr.uw.edu/coronavirus/policy-updates/covid-19-employment-accommodation-for-high-risk-employees/">https://hr.uw.edu/coronavirus/policy-updates/covid-19-employment-accommodation-for-high-risk-employees/</a></p>
<p>4. Describe practices for responding to suspected or confirmed COVID-19 cases.</p>	<p>X Inform personnel with <a href="#">COVID-19 symptoms</a> to stay home, get tested, and notify the <a href="#">COVID-19 Response and Prevention Team</a>, regardless of vaccination status.</p> <p>X Inform personnel with suspect or confirmed COVID-19 to stay home and notify the <a href="#">COVID-19 Response and Prevention Team</a>.</p>	<p>Actions will be taken as outlined to the left if/when symptomatic or suspected/confirmed cases occur.</p>



	<p>X Inform non-fully vaccinated personnel who have had close contact with someone with COVID-19 to stay home and notify the <a href="#">COVID-19 Response and Prevention Team</a>.</p> <p>X Perform necessary <a href="#">cleaning and disinfection</a>.</p>	Department will work with EH&S on contact tracing and reporting, as well as ensuring appropriate cleaning and disinfecting occurs.
<b>CLEANING SURFACES</b>	<b>Check all that apply (all required):</b>	<b>Describe:</b>
5. Cleaning	<p>X Follow the <a href="#">COVID-19 Enhanced Cleaning and Disinfection Protocol</a>.</p> <p>X Provide supplies for spot cleaning.</p>	<p>Custodial services will clean all common areas daily. Personnel are encouraged to clean workstations throughout the day. Disinfectant wipes are provided at all locations where shared equipment is used (copy rooms, kitchenettes, etc.) so individuals can clean equipment after use.</p> <p>Front Office staff will ensure high touch areas in main area are cleaned daily.</p>
6. List the product(s) used to disinfect.	<p><b>Check all that apply:</b></p> <p>X Alcohol solution with at least 70% alcohol (includes wipes)</p> <p>X 10% fresh bleach/water solution</p> <p>X <a href="#">EPA-registered disinfectant for use against SARS-CoV-2</a>:</p>	<p>Clorox Wipes</p> <p>Ecolab Peroxide multi surface cleaner disinfectant</p> <p>Cleaning solutions and paper towels</p>



<p>7. Describe the safety precautions taken when using disinfectant(s).</p>	<p>X Ensure personnel know where to find <a href="#">safety data sheets</a> (SDS) for each product.</p> <p>X Review the <a href="#">COVID-19 Chemical Disinfectant Safety Information</a>.</p> <p>X Follow the manufacturer’s instructions for the products used.</p> <p>X Use appropriate <a href="#">personal protective equipment</a> (PPE) for the workplace and work tasks.</p>	<p>ECE is using products specified by UW Custodial Services. The MSDS kept on file electronically and product use and safety information provided in site specific training.</p>
---	--	--

<b>GOOD HYGIENE</b>	<b>Check all that apply (all required):</b>	<b>Describe:</b>
<p>1. Describe methods used to encourage good hygiene.</p>	<p>X Provide soap and running water.</p> <p>X Provide hand sanitizer and/or wipes/towelettes.</p> <p>X Ask personnel to avoid touching others.</p> <p>X Use <a href="#">reminders</a> to wash hands frequently and correctly at key moments, avoid touching face with unwashed hands, and cover mouth when coughing or sneezing.</p>	<p>All floors have multiple public restrooms available with running water. All other items covered in various forms of communication as previously indicated (email, meetings, training, and signage).</p>
<b>FACE COVERINGS, ALTERNATE STRATEGIES AND PPE</b>	<b>Check all that apply:</b>	<b>Describe:</b>



<p>2. Require face coverings for individuals who are not verified to be fully vaccinated.</p>	<p>X Follow the procedures in the <a href="#">UW COVID-19 Vaccination Policy</a> to identify personnel who must continue to wear face coverings.</p> <p>X Ensure that non-fully vaccinated individuals wear face coverings indoors when other people are present and in all public and common areas.</p> <p><input type="checkbox"/> Ensure all wear face coverings in areas where they are required regardless of vaccination status (e.g., health care, childcare, K-12)</p> <p>X Communicate through signage and other means to vendors, visitors, and the public on face covering requirements, as dictated by vaccination status or other space-use designations (healthcare, K-12 settings, etc.)</p>	<p>Administrator and HR Specialist run a weekly report of attestation completions and send to supervisors, so they can enforce mask wearing for individuals in their areas not attested as fully vaccinated.</p> <p>Signs are posted in the main office to remind all who enter, included vendors, of the policy to wear a mask if not fully vaccinated.</p>
<p>3. Alternate Strategies and PPE (if applicable)</p>	<p>X No alternate strategies are necessary.</p> <p><input type="checkbox"/> Supervisor identified that alternate strategies are needed through review with EH&amp;S and unit leadership approval.</p> <p><input type="checkbox"/> Develop or document a job hazard analysis that identifies the hazards and control strategies to minimize the risk of exposure.</p> <p><input type="checkbox"/> Refer to the <a href="#">Workplace COVID-19 Risk Level and Selection of Personal Protective Equipment</a> to determine if additional PPE is required.</p> <p><input type="checkbox"/> Train personnel on alternative strategies use, including on the use and care of PPE if applicable. Document the training.</p>	<p>N/A</p>
<p><b>COMMUNICATION AND TRAINING</b></p>	<p><b>Check all that apply (all required):</b></p>	<p><b>Describe:</b></p>
<p>4. Communicate safe practices.</p>	<p>X Ask personnel and students to activate the <a href="#">Washington Exposure Notifications – WA Notify</a> on their mobile devices.</p> <p>X Ensure all personnel complete UW general <a href="#">COVID-19 Safety Training</a>.</p> <p>X Provide documented safety training to personnel on this site-specific COVID-19 Prevention Plan, initially and when updates are made.</p>	<p>Before entering the building, all personnel are required to:</p> <ul style="list-style-type: none"> <li>- View the UW COVID-19 Safety Training</li> </ul>



	<p>X Post a COVID-19 safety <a href="#">posters/signage</a> at the worksite.</p> <p>X Share information from the <a href="#">UW Novel coronavirus &amp; COVID-19: facts and resources</a> webpage.</p>	<ul style="list-style-type: none"><li>- Read the ECE COVID19 Prevention Plan and log your completion in the Google form</li><li>- If your destination is a specific lab, obtain training for that space from the appropriate Covid-19 Site Supervisor.</li><li>- Complete vaccination attestations</li><li>- Bring and wear your face covering as appropriate</li></ul> <p>Information will be shared through our website and email as updates occur</p>
<p>5. Communicate hazards and safeguards to protect personnel.</p>	<p>X Provide information about <a href="#">working safely with disinfectants</a>.</p> <p>X <a href="#">Communicating the hazards and safeguards</a> required to protect individuals from exposure.</p>	

