



"My WiFi is not working!" Augmenting Wireless Awareness in Consumers via XR

Qiancheng Li, Xinghua Sun, Akshay Gadre

Fixing wireless is difficult for consumers

- Environment significantly affects wireless signals
- Difficult to prescribe customer specific solutions
- Current approaches:
 - Measurements on devices
 - Move the router antennas
 - Change router location randomly

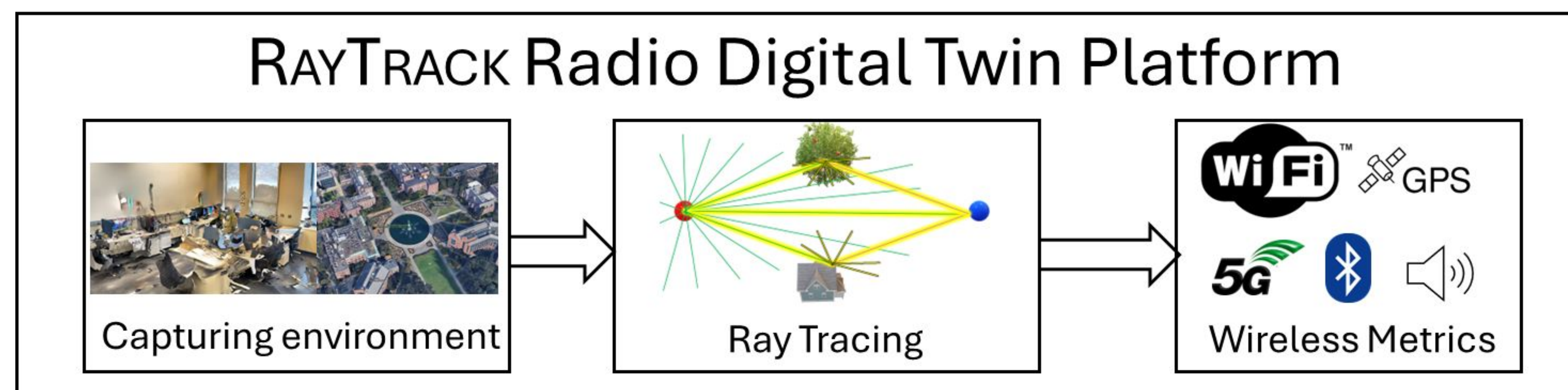
Issues :

1. Takes too much time!
2. Depends on anecdotal analysis
3. Can reduce coverage at other locations

New Opportunity : Capture the environment directly

Our Vision

Personalized Radio Digital Twins for Wireless Consumers

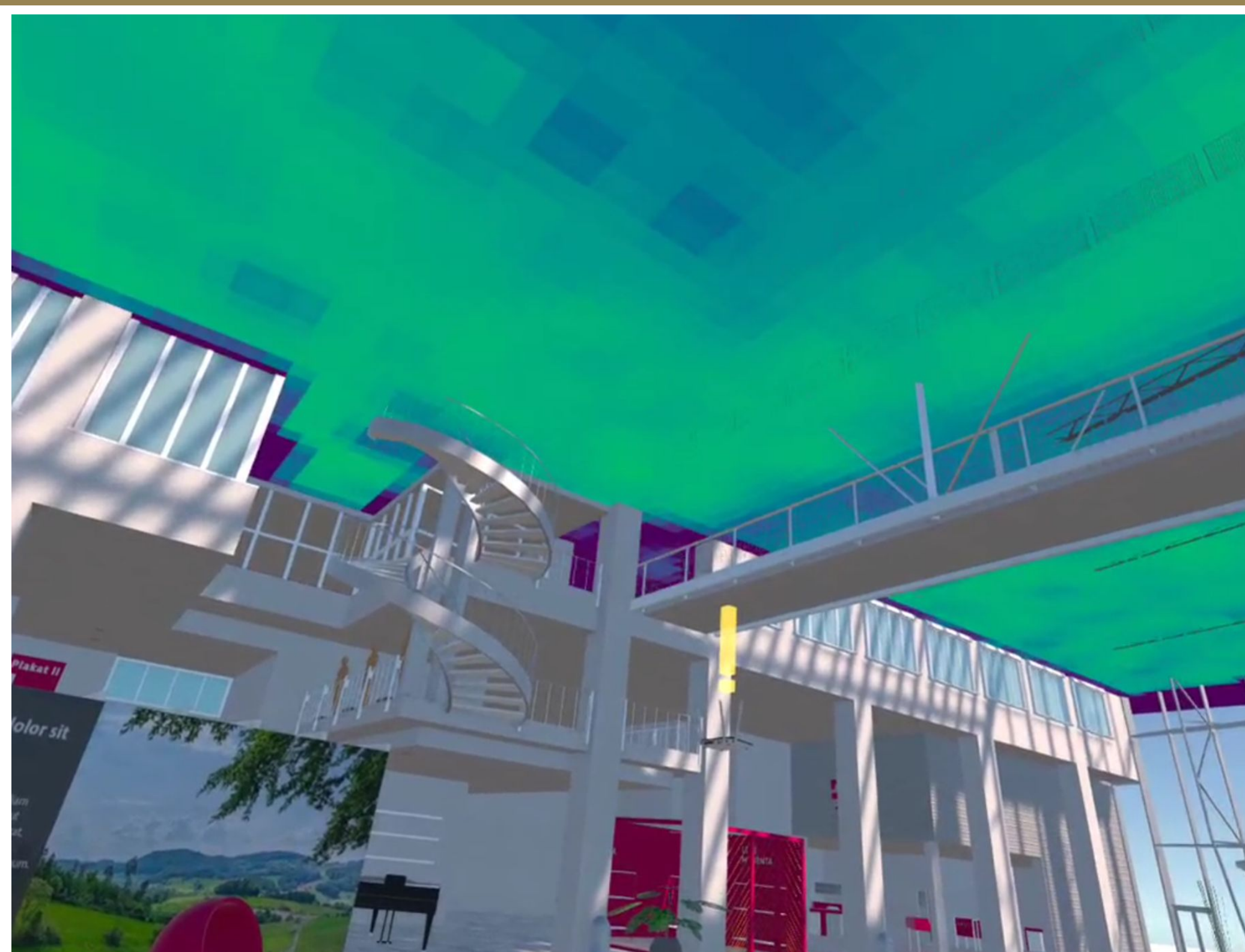


**Phone (Indoor)
/Satellite Images (Outdoors)
LiDAR + Camera**

**Parallelized SBR Tools
Sionna/Matlab
Antenna and Surface Modelling**

**Based on Impulse Response
Communication Theory
Reinforcement Learning**

Demo 1 – Large Scale Indoor Propagation



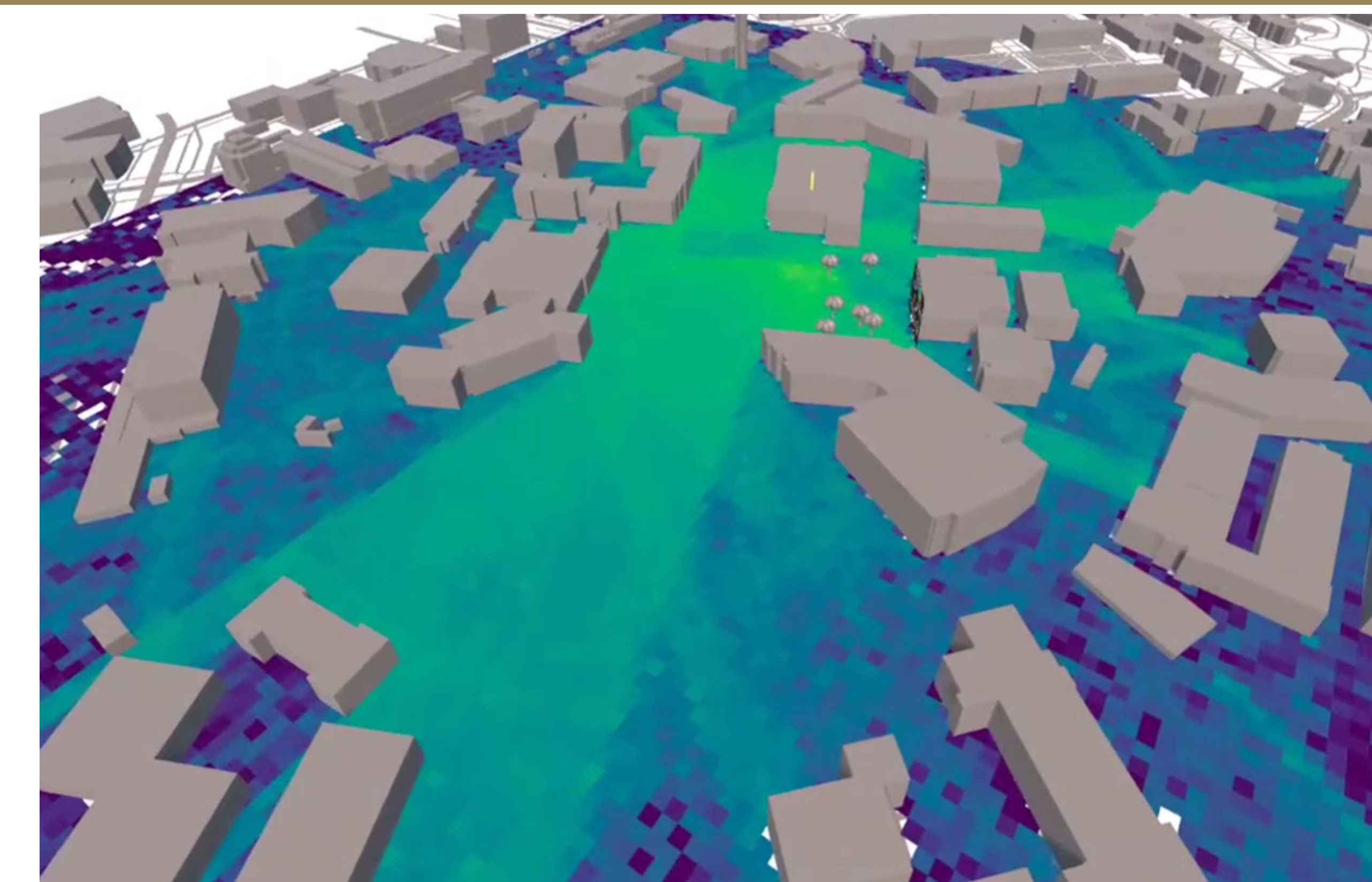
**Experience the propagation of WiFi in 3D
for complex indoor environment**

Demo 2 – Indoor WiFi Coverage



**Customize WiFi indoors on captured
environment for improved coverage**

Demo 3 - Outdoor Cellular Deployment



**Modelling Cellular Coverage Outdoors for
Improving Consumer Experience**